

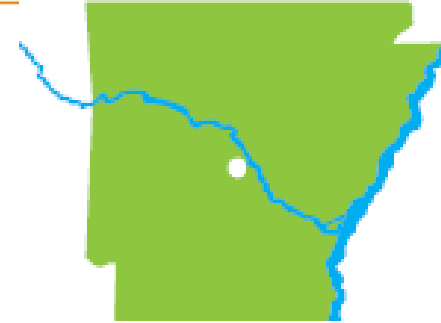
Engineer of Record - LRPA

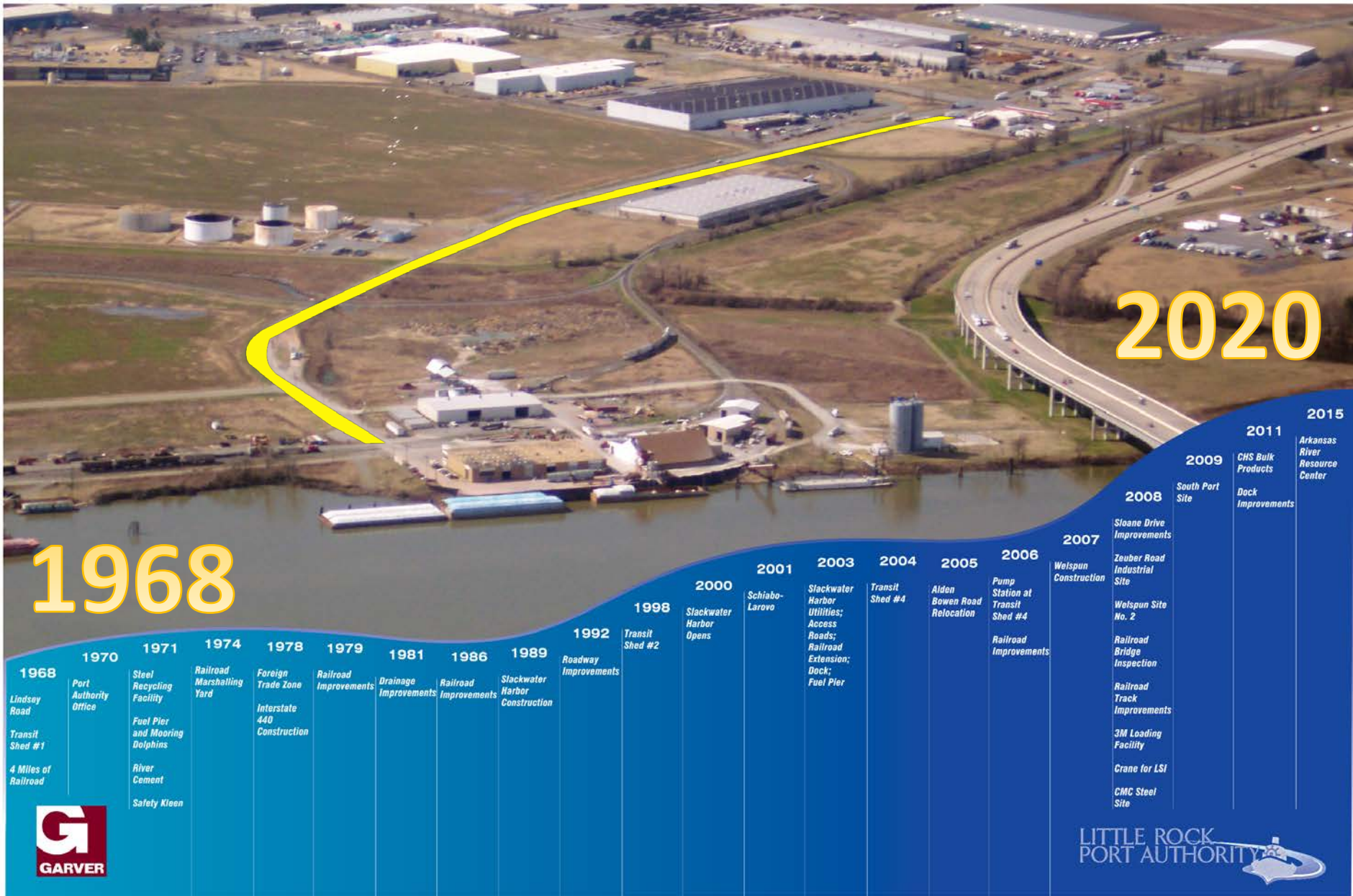
Asset Development

- Rail, Docks, Streets, Site Development, Moorings, Buildings, Slackwater Harbor, Mapping for Prospects

Asset Maintenance

- Railroad Maintenance, Bridge Inspections, Dock Inspections, Railroad Crossing Inventory, USACE Fill Permitting, Scouring Repairs





1968

2020

1968	1970	1971	1974	1978	1979	1981	1986	1989	1992	1998	2000	2001	2003	2004	2005	2006	2007	2008	2009	2011	2015
Lindsay Road Transit Shed #1 4 Miles of Railroad	Port Authority Office	Steel Recycling Facility Fuel Pier and Mooring Dolphins River Cement Safety Kleen	Railroad Marshalling Yard	Foreign Trade Zone Interstate 440 Construction	Railroad Improvements	Drainage Improvements	Railroad Improvements	Slackwater Harbor Construction	Roadway Improvements	Transit Shed #2	Slackwater Harbor Opens	Schiabo-Larovo	Slackwater Harbor Utilities; Access Roads; Railroad Extension; Dock; Fuel Pier	Transit Shed #4	Aldon Bowen Road Relocation	Pump Station at Transit Shed #4 Railroad Improvements	Welspun Construction	South Port Site	CHS Bulk Products	Arkansas River Resource Center	
																	Sloane Drive Improvements Zauber Road Industrial Site Welspun Site No. 2 Railroad Bridge Inspection Railroad Track Improvements 3M Loading Facility Crane for LSI CMC Steel Site	Dock Improvements			



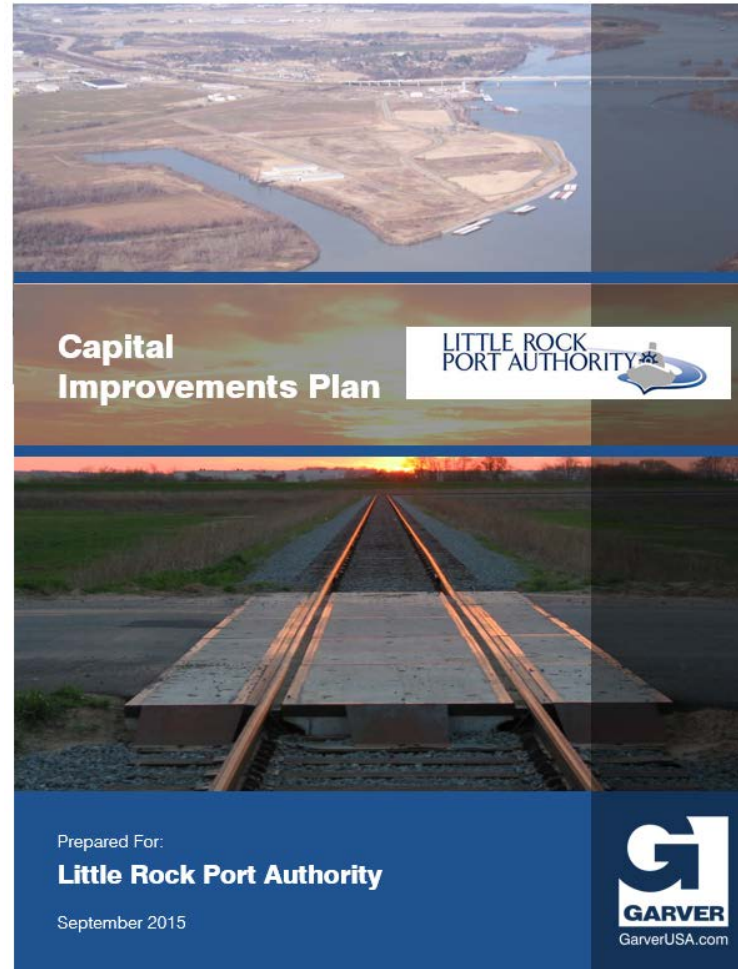
ENGINEERING AT THE PORT

Garver has provided the Little Rock Port with Planning, Design and Construction Oversight for Projects Including:

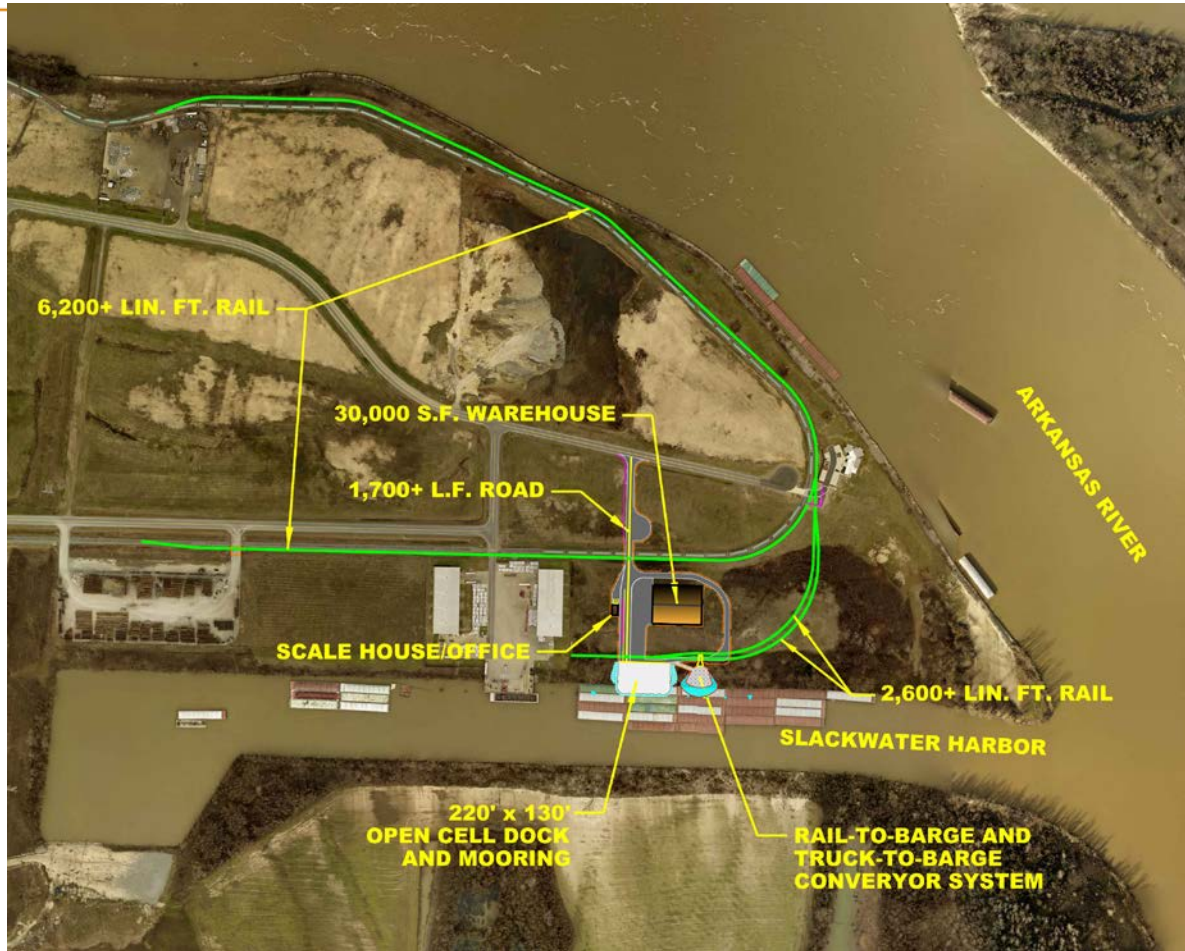
- Over 15 Miles of Railway
- Over 5 Miles of Streets
- River Dock
- Moorings
- Slackwater Harbor
- Slackwater Dock
- Warehouses
- Material Handling



CAPITAL IMPROVEMENTS PLAN



TIGER GRANT – PORT OF LITTLE ROCK



- 8,800 Track-Feet of Rail
- 1,700 Linear Feet of Roadway
- 220-Foot x 130-Foot Open Cell Dock
- 30,000 Square Feet of Warehouse Space
- Truck Scales w/ New Scale House and Office Space
- Truck-to-Barge and Direct Rail-to-Barge Material Handling and Conveyor System
- MARAD Reporting – SF 425, Quarterly Reports, and Annual Reports – \$10 Million