

https://www.nwd-mr.usace.army.mil/rcc/reports/pdfs/weeklyupdate.pdf

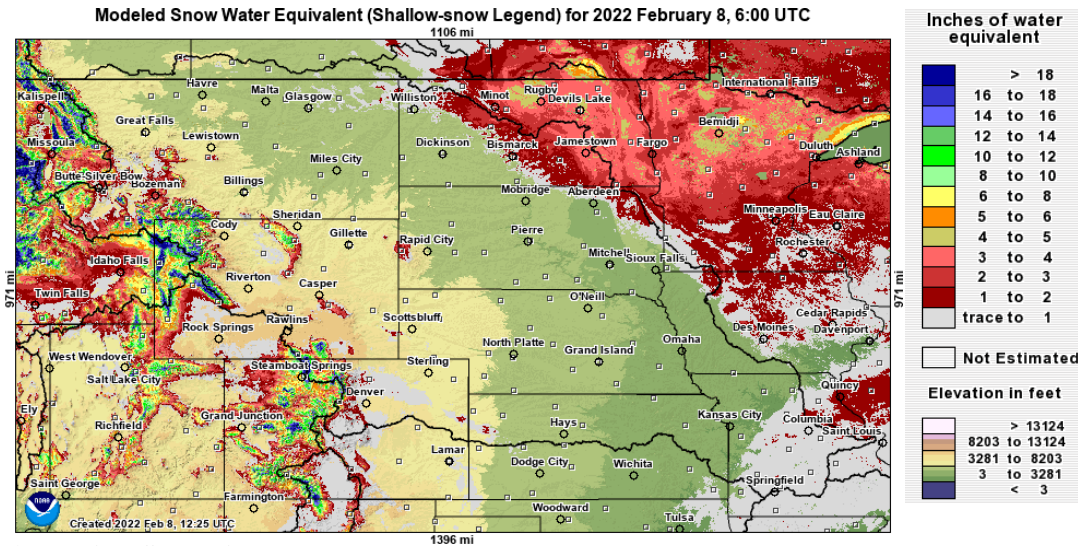
# Missouri River Basin – Update – 08 Feb 2022

## Mainstem Reservoir Status:

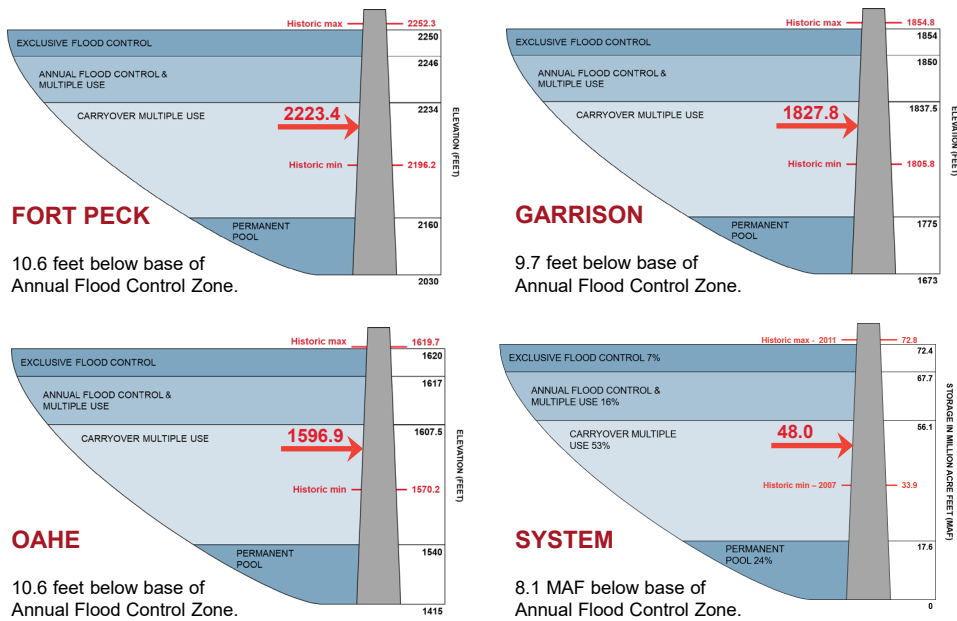
- ❖ System storage is 48.0 MAF, the same as last week.
- ❖ The 2021-2022 Final AOP has been posted to our website ([click here](#)).
- ❖ The Gavins Point release is back at the winter minimum of 12,000 cfs after going up to 14,000 cfs for a few days due to cold weather. The release schedule for Gavins Point is provided in our daily forecast ([click here](#)).
- ❖ Around 1 to 4 inches of snow water equivalent (SWE) remains in North Dakota and northeastern South Dakota (upper right quadrant). Up to one inch of SWE covers central Missouri.
- ❖ Mountain snowpack (lower right quadrant) is slightly below average. The 30-year average lines (1991-2020) for both reaches will be updated when data becomes available.
- ❖ Refer to the 3-Week Forecast ([click here](#)) for the most up-to-date System information – pool levels, inflows, and releases.

## Plains Snowpack

February 8, 2022

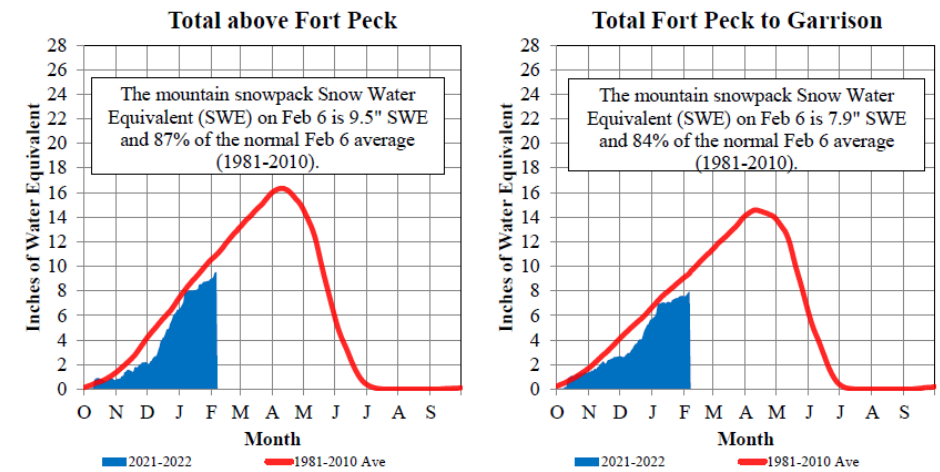


## Current Reservoir Levels



## Mountain Snowpack

February 6, 2022



The Missouri River Basin mountain snowpack normally peaks near April 15. The 30-year average lines (1981-2010) for both reaches will be updated when the data becomes available to (1991-2020).

[Click Here](#) for Latest 3-Week Forecast

[Click Here](#) for Comparison Plots