

# SUMMARY OF ONGOING DREDGING AND MARINE CONSTRUCTION PROJECTS

Arranged by State, North to South, and Newest information on top (for each State).

Updated 04/06/2022

## NEW OR UPDATED INFORMATION

New, updated or very important information in this enclosure will be highlighted in yellow.

### MAINE

#### ME-GREAT CHEBEAGUE ISLAND-Revised

Burnham Associates, Inc will be improvement dredging of Great Chebeague Island in position 43- 34-6.24N and 070-6-29.772W from Feb 4, 2022 through April 15, 2022, 24 hours a day, 7 days a week. Disposal site will be the Portland Disposal site (see picture for haul route). Equipment on scene will be the dredge SAMSON III, scow SE 103, push boat STRIDER, workboat SCULLY 23, and tug AEGEAN SEA. Project operations will monitor VHF Channels 13, 16, and 18 during working hours. Passing arrangements vary dependent on the ongoing activity, all arrangements with work vessels via VHF radio. Floating plant will be lit at night and during limited visibility. Mariners are urged to transit at their slowest safe speed to minimize wake and proceed with caution.

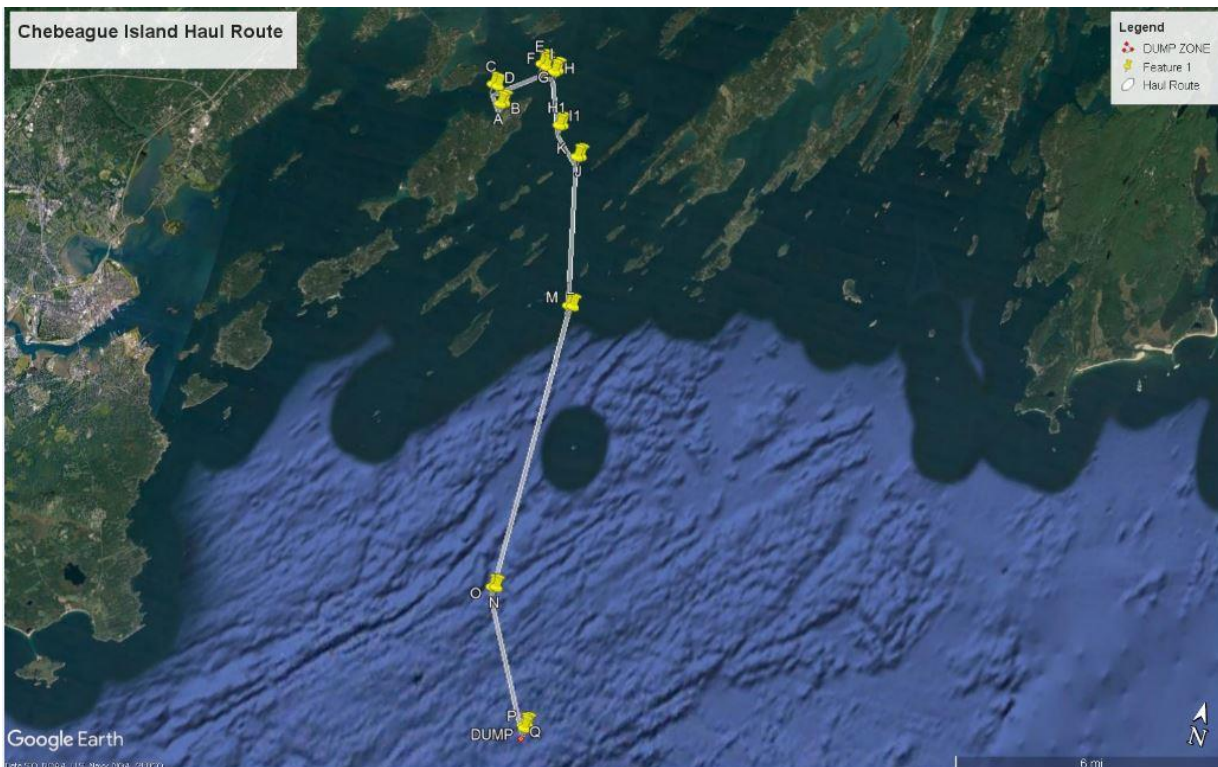


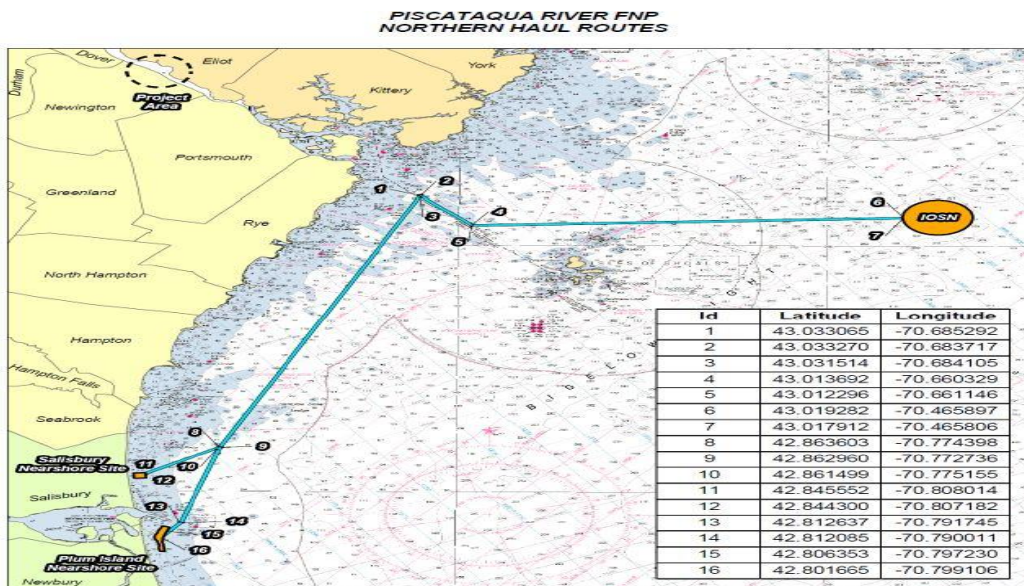
Chart 13288 13290 LNM 10/22

## NEW HAMPSHIRE

### NH-PISCATAQUA RIVER-PORTSMOUTH HARBOR TO NEWINGTON-Revised

Great Lakes Dock and Dredge, Inc. will be conducting maintenance and improvement dredging in Portsmouth Harbor and Piscataqua River, Newington, New Hampshire and Eliot, Maine starting 1 November 2021 to 15 April 2023, 24 hours a day, 7 days a week. The project consists of the expansion of the 35 Foot Turning Basin located on the Piscataqua River near Portsmouth, NH. A total of 677,100 CY of new work sand/clay/glacial till material along with 14,700 CY of Rock shall be removed by mechanical dredge and disposed of at various locations including offshore, nearshore, or pumped out onto Nantasket Beach, MA depending on Option award. Project grade for the Turning Basin shall be -35' +2' in "Ordinary" non-rock material, and 37' +2' MLLW in a defined Rock area. The Base work involves the dredging of the full quantity 691,800 CY of new work ordinary material and rock at the Isles of Shoals North (IOS-N) Offshore Disposal Site. Equipment on scene will be the Dredge New York, Dredge 55, 2 - 500's Scows & 1 - 600's scow, SCOW THOMAS DESMOND, Tug boats MARCELLA G. GONDRAN, COMET, MISS GLORIA, SMITH PREDATOR, STEPHEN J. LEAMAN, KENDALL J. HERBERT, Survey Vessel WOLF RIVER, and Crew Boat COOPER RIVER Vessels will be monitoring VHF-FM Channels 13 and 16. For the cautionary and drilling and blasting area, mariners are urged to use extreme caution in the area. Mariners are urged to transit at their slowest safe speed to minimize wake and proceed with caution after passing arrangements have been made.

For drilling, blasting, and work operations: There will be a 100 yard safety zone around any vessel, barge, or dredging equipment engaged in dredging operation. Blasting operations start approximately December 10 through December 25, 2021. There will be a 500 yard safety zone around any vessel, barge, or dredging equipment engaged in blasting operations and any blasting worksites. To protect persons and vessels from hazards during blasting, the channel will be closed for approximately 30-45 minutes. Mariners will be notified via Broadcast Notice to Mariners the day prior and the morning of for blasting operations and channel closures. For full review of the Notice to Proposed Rulemaking and Temporary Final Rule, please input docket number USCG-2021-0344 into the Federal eRulemaking Portal at <https://www.regulations.gov>.



Dredging Areas				
Turning Basin Improvement Dredging Footprint (1802 Maine West 1983 StatePlane)				
#	Eastings	Northing	Latitude	Longitude
37	2,781,132.49	104,918.55	43° 07' 09.8381"N	-070° 48' 33.8654"W
38	2,781,472.18	104,513.07	43° 07' 05.8590"N	-070° 48' 29.3687"W
39	2,781,727.45	103,754.53	43° 06' 58.1889"N	-070° 48' 25.8419"W
A	2,781,445.00	104,978.00	43° 07' 10.4489"N	-070° 48' 29.7781"W
B	2,781,854.93	104,754.71	43° 07' 08.2745"N	-070° 48' 24.2282"W
C	2,782,069.00	104,432.00	43° 07' 05.1033"N	-070° 48' 21.3068"W
D	2,782,511.45	103,080.69	43° 06' 51.7901"N	-070° 48' 15.2050"W
HARD ROCK MATERIAL FOOTPRINT COORDINATES (1801 Maine West 1983 StatePlane)				
#	Eastings	Northing	Latitude	Longitude
1	2,781,278.35	104,758.27	43° 07' 08.2661"N	-070° 48' 32.0023"W
2	2,781,362.22	104,830.47	43° 07' 08.9855"N	-070° 48' 30.8790"W
3	2,781,404.99	104,780.78	43° 07' 08.4980"N	-070° 48' 30.2972"W
4	2,781,435.24	104,806.81	43° 07' 08.7574"N	-070° 48' 29.8920"W
5	2,781,584.17	104,833.78	43° 07' 07.0597"N	-070° 48' 27.8663"W
6	2,781,615.77	104,660.98	43° 07' 07.3307"N	-070° 48' 27.4430"W
7	2,781,689.18	104,575.68	43° 07' 06.4937"N	-070° 48' 26.4445"W
8	2,781,655.11	104,546.35	43° 07' 06.2015"N	-070° 48' 26.9008"W
9	2,781,700.14	104,494.03	43° 07' 05.6881"N	-070° 48' 26.2883"W
10	2,781,654.40	104,454.65	43° 07' 05.2957"N	-070° 48' 26.9009"W
11	2,781,706.57	104,394.03	43° 07' 04.7010"N	-070° 48' 26.1013"W
12	2,781,621.41	104,320.72	43° 07' 03.9705"N	-070° 48' 27.3319"W
13	2,781,518.13	104,440.71	43° 07' 05.1478"N	-070° 48' 28.7367"W
14	2,781,537.40	104,457.30	43° 07' 05.3131"N	-070° 48' 28.4786"W
Disposal Areas				
NEWBURY NEARSHORE DISPOSAL-SITE BOUNDARY COORDINATES (2001 Mass. Mainland StatePlane)				
#	Eastings	Northing	Latitude	Longitude
1	845029.56	3120627.43	42° 48' 32.3868"N	-070° 47' 45.3639"W
2	844342.261	3118312.317	42° 48' 09.5764"N	-070° 47' 55.8391"W
3	844233.74	3117516.497	42° 48' 01.7249"N	-070° 47' 57.3824"W
4	844238.74	3117166.819	42° 47' 58.2712"N	-070° 47' 57.4209"W
5	844378.435	3116346.883	42° 47' 50.1609"N	-070° 47' 55.5706"W
6	844583.418	3114694.954	42° 47' 33.8281"N	-070° 47' 53.0037"W
7	843956.409	3114743.185	42° 47' 34.3554"N	-070° 48' 01.4073"W
8	843823.772	3115804.278	42° 47' 44.8466"N	-070° 48' 03.0695"W
9	843908.177	3116214.246	42° 47' 48.8890"N	-070° 48' 01.8923"W
10	843642.904	3117190.834	42° 47' 58.5572"N	-070° 48' 05.3429"W
11	843293.226	3118179.68	42° 48' 08.3513"N	-070° 48' 09.9246"W
12	843377.631	3118661.996	42° 48' 13.1083"N	-070° 48' 08.7396"W
13	843558.499	3119108.137	42° 48' 17.5002"N	-070° 48' 06.2645"W
14	843739.367	3119795.436	42° 48' 24.2740"N	-070° 48' 03.7628"W
15	844221.682	3120904.761	42° 48' 35.1917"N	-070° 47' 57.1707"W
SALISBURY NEAR SHORE DISPOSAL-SITE BOUNDARY COORDINATES (2001 Mass. Mainland StatePlane)				
#	Eastings	Northing	Latitude	Longitude
1	840568.145	3132540.613	42° 50' 30.4117"N	-070° 48' 44.9240"W
2	840483.74	3133830.806	42° 50' 43.1614"N	-070° 48' 45.9173"W
3	841954.801	3133939.327	42° 50' 44.1157"N	-070° 48' 26.1603"W
4	842027.148	3132661.192	42° 50' 31.4860"N	-070° 48' 25.3286"W
ISLES OF SHOALS NORTH (IOS-N) DISPOSAL SITE - DISPOSAL TARGET SITE FOR ORDINARY MATERIAL (See C-103 section on Disposal site coordinates)				
TARGET SITE RADIUS 500 feet				
#	Eastings	Northing	Latitude	Longitude
1	2875161.878	68769.377	43° 01' 17.9544"N	-070° 27' 24.4908"W
ISLES OF SHOALS NORTH (IOS-N) DISPOSAL SITE -- DISPOSAL TARGET SITE FOR HARD (ROCK) MATERIAL (See C-103 section on Disposal site coordinates)				
TARGET SITE RADIUS 500 feet				
#	Eastings	Northing	Latitude	Longitude
1	2875717.568	71103.856	43° 01' 41.0268"N	-070° 27' 17.1180"W

Charts 13286 13287 LNM 40/21

## MASSACHUSETTS

### **MA-CENTERVILLE HARBOR-EAST OF SPINDLE ROCK**

Vineyard Wind will be placing two orange A3 Norwegian, Sub Surface marker buoys in position 41-37-55.0452N, 070-19-59.1204W and 41-37-55.234N, 070-20-0.9168W. The buoys will be on scene between March 30- October 30, 2022 and will be secured to sea bottom 2.5m above sediment (8.2ft) in approximately 14 feet of water. The buoys are marking the location of the conduit flange at the punch out location. The hours of operation will be 24 hours a day of operation are 7 days per week. POC: Jeannot Smith (904) 613-0134.

13237 14-41/22

### **MA- MARSHFIELD, GREEN HARBOR**

The US Army Corps of Engineers (USACE) WILL be conducting shore side mechanical and hydraulic dredging of the Green Harbor entrance channel, in position 42-05-00N and 070-38-00W. The shore based work will commence the first week of April 2022. In mid April the USACE Dredge Vessel MURDEN will be onsite conducting hydraulic dredging and supporting the shore based crews. This work is scheduled to be completed by the end of April 2022. The Green Harbor entrance channel has sustained SEVERE shoaling over the past couple of years. Mariners are advised to use caution while transiting the area. Water depths at low tide can be as shallow as 2.5 feet, in the “narrows” entrance of the federal channel. The Federal channel width has been reduced from 100 feet to 40 feet at low tide. Mariners should not attempt to transit the area until 2.5 hours into the Flood tide cycle. Additional time should be allotted for minus tides/astronomically low tides. Marshfield Harbormaster Monitors Channels VHF-FM CH 16 & VHF-FM CH 9 Dredge USACE Dredge Vessel MURDEN monitors VHF-FM 16/13. Mariners are urged to transit at their slowest safe speed to minimize wake and proceed with caution.

13267 LNM 11/22

### **MA-BUZZARDS BAY-NEW BEDFORD HARBOR**

The U.S. Army Corps of Engineers will conduct maintenance and inspection work on the navigation gates of the New Bedford / Fairhaven Hurricane Barrier starting on Thursday February 3rd, 2022. The work includes wheel replacement, steel repairs, corrosion protection painting, and timber fender replacement. The repair work is expected to continue until the end of April 2022. During this time the Barrier will be out of service for flood control operations. The navigation opening of the Barrier will remain open to vessel traffic during this period, but the available width of the 150-foot navigation opening will be reduced periodically when work vessels are operating in the channel. This will include multiple days when a barge with a 40-foot beam is positioned alongside one of the gates. Mariners may contact the U.S. Army Corps of Engineers New Bedford /Fairhaven Hurricane Barrier on Channel 13 VHF to coordinate vessel movements or obtain current information on the ongoing repair work. Mariners are advised to transit with minimal speed and wake and proceed with extreme caution through the New Bedford / Fairhaven Hurricane Barrier while the maintenance and inspection operations are being conducted.

13229 13233 LNM 06/22

## **MA-BOSTON HARBOR- RESERVE CHANNEL DREDGING-Revised**

Mariners are advised that Great Lakes Dredge and Dock in coordination with Black Dog Dive Service will resume operations in **The Boston Harbor Phase 3 Rock Removal Project** consists of the removal of 493,610 CY of new work hard material and rock in service of deepening the Boston Harbor to a project grade of 49' MLLW. Disposal of material shall be at the Disposal Site located offshore roughly 20 NM from the work area. Blasting of rock prior to removal is expected to be necessary. Incidental work items include vibration and underwater pressure monitoring for installing vibration monitoring equipment below the seabed between blast zones and the Central Artery Tunnel, and the Eversource HDD electric cable. Work is scheduled to commence April 5, 2022 in the vicinity of Black Falcon terminal in the Reserve Channel consisting of pile and debris removal. On scene equipment will be the Dredge NEW YORK, Drill boat Apache, Dredge 55, Crane #1, 2 500's Scows & 2 600's scows, Tug boats TBD, Survey Vessel WOLF RIVER, Crew Boat SAGINAW RIVER. Work hours will be from 24 hours a day, 7 days a week thru June 30, 2022. "Mariners are urged to transit at their slowest safe speed to minimize wake and proceed with caution after passing arrangements have been made." For dredging, and work operations: A 100 yard safety zone will remain in effect around equipment conducting normal dredging operations. POC Mr. Johan Vanbladel (630) 235-9612, Mr. Stephan Brogna (917) 864-6062, Tug Kendal Hebert (985) 691-3175 or via CH 16 VHF-FM

Chart 13270 13272 LNM 14/22

## **MA -OFFSHORE-SOUTH OF NANTUCKET ISLAND**

Fugro USA Marine Inc. will be conducting Geotechnical site investigation, comprising of drilling and performance of seabed Piezo Cone Penetration Testing (PCPT) within Federal waters from 7 December 2021 – 30 May 2022, 24 hours a day/7 days a week. Offshore vessel operations are planned within OCS-A 0521 lease (South of Nantucket). Equipment on scene will be the Geotechnical drilling vessel FUGRO EXPLORER. The vessel will be fixed to the seabed and require at least two hours' notice to move, please observe a minimum 0.5NM passing clearance. Vessel will be monitoring VHF-FM ch 16.

Chart 12300 LNM 47/21

## **MA-SPRINGFIELD-CONNECTICUT RIVER**

Installation of force sewer main piping across the Connecticut River will be done from June 1, 2021 - January 22, 2022. J.F. White Contracting Co. shall perform construction activities within the Connecticut River Banks in accordance with the above referenced Project. Work activities listed below shall occupy portions of the Connecticut River during the various phases of Construction. The worksite is located at mile 73, approximately 0.75NM south of Memorial Bridge and .05NM North of the South End Bridge. The work is required for the installation of piping to be utilized for the transmission of Sewage from the city of Springfield to the Wastewater Treatment Facility located in Agawam. Permanent piping will be installed five feet below river bottom. A 200' navigable channel shall be maintained at all times. Upstream and Downstream navigational buoys shall be installed to direct boaters towards the navigable passage. SL-15-W solar powered navigational lights shall be affixed to the H-Piles installed to support the environmental curtain. Waterwork activities shall commence on June 1st 2021. Construction activities shall access the river via a temporary trestle located on the West riverbank. All vessels and barges outside the containment areas shall have SL-15-W navigational lighting. See below list of activities and anticipated construction dates:

Phase 1 - Connecticut River – Mile 73: Construction & Dredging for Pipeline Crossing Activities shall commence on or about June 1, 2021 and continue until the August 20, 2021 pending production. Temporary pile to support environmental curtains shall extend 600 feet into the river from the West bank and 1000 feet north tapering from the shore to the center of the River. Piles shall be lighted with navigational steady all-round white lights. Clear navigable passage for boaters will be maintained on the eastern side of the river.

Phase 2 – Connecticut River – Mile 73: Construction & Dredging for Pipeline Crossing Activities shall commence on or about August 20, 2021 and continue until the end of January 2022 pending weather and production. Temporary pile to support environmental curtains shall extend 525 feet into the river from the East bank and 1000 feet north tapering from the East bank shore to the center of the River. Piles shall be lighted with navigational steady all-round white lights. Clear navigable passage for boaters will be maintained on the Western side of the river.

Phase 3 – Connecticut River – Mile 73: Construction & Dredging for Pipeline Crossing Activities shall commence on or about June 1, 2022 and continue until the end of October 2022 pending weather and production. Temporary pile to support environmental curtains shall extend 600 feet into the river from the West bank and 1000 feet north tapering from the West bank shore to the center of the River. Piles shall be lighted with navigational steady all-round white lights. Clear navigable passage for boaters will be maintained on the eastern side of the river.

**Project Schedule & Time:**

Phase I: June 1, 2021 - August 20, 2021: 1- (10) hour shift – 7:00 am-5:30 pm – Monday thru Saturday

Phase 2: August 20, 2021 - January 2022: 2- (10) hour shifts – 6:00 am-4:30 pm – Monday thru Saturday -4:30 am-2:30 am– Monday thru Saturday

\* 2nd shift time and durations may vary based on weather, production, and specific activities.

**Anticipated Equipment:**

1 150-180 Ton Crane Mount on 70’ x 80’ x 7’ Poseidon (2) Spud Barge

2 215,000 LB Komatsu 1250 Excavator Dredge Barge w/ (4) powered spuds

3 30’x 80’ x 7’ Material / Environmental Controls - Poseidon section barges w/ cleats

1 300HP-400HP shallow water push boat.

1 225 HP Sea Bee 180-degree hydraulic thruster-master

1 60hp work boat

1 8’x10’x3’ Environmental work barge w/ motor

1 DOC Inspection Boat (Daniel O’Connell’s Sons)

Due to barge mounted equipment and Dive operation safety concerns; Boater are advised to exercise extreme caution when transiting the area at “No Wake” and to monitor VHF Channel 13/16. Boaters may contact J.F White Contracting Co at 617-454-1832 or Project Manager Robert Pellerin at 508-905-9582.

LNM 20/21

**RHODE ISLAND**

**None to Report**

**CONNECTICUT**

**CT-THAMES RIVER-NEW LONDON**

KIEWIT Infrastructure Co. will be conducting Marine construction and dive work on the New London State Pier, until 01 June 2022, from 6:00am to 6:00pm. Equipment on scene will barges, crane barges, a tug boat, safety boat and divers. Vessels can be contacted of VHF-FM channels 13 and 16. Mariners are urged to transit at their slowest safe speed to minimize wake and proceed with caution.

**NEW YORK**

**NY/NJ HARBOR – LOWER BAYS TO EAST RIVER**

Ocean surveys will be taking vibratory core sediment samples 24/7 from April 11-14, 2022. The OSV BERTO MILLER can be contacted on VHF CH 13 & 16 to making passing arrangements. Samples will be taken between East River-northern extent: 40-40-48.5184N, 074-1-24.312W and the Lower Harbor-southern extent: 40-31-0.6384N, 074-1-39.18W.

Chart 12327 LNM 14-15/22

**NY-LONG ISLAND SOUND WESTERN PART-MILTON HARBOR**

Geomatrix Services, Inc., Nicky Diggs Excavation will be conducting road drainage Improvement Project on Milton Road in Milton Harbor, City of Rye, Westchester County at Latitude & Longitude of work area (Degrees, Minutes, Thousandths of seconds): Lat: 40-57'-23.526"N, 73-41'-23.942"W from February 1, to April 15, 2022, 8:00 AM to 4:00 PM.

Equipment on scene will be an Excavator, Loaders, Skid Steer.. Equipment on scene will not impede navigation. Vessels are requested to navigate with caution in this area.

12367 LNM 04/22

**NY-EAST RIVER, HARLEM RIVER, NEWTOWN CREEK**

Bud South, LLC. Will be conducting Riprap shoreline maintenance and outfall pipe installation within Newtown Creek, shoreline of property at 55-01 2<sup>nd</sup> Street (AKA 2-20 Malt Drive), NY in approximate position 40-44-20N 073-57-32W. Work will be conducted from 28 December 2021 – 31 December 2022, from 7:30am – 5:30pm. Equipment on scene will be a turbidity curtain, steel sheeting, concrete outfall, an Eco-Mat, a Robotize Hammer, 2 excavator, front end loader, and a pile driver. No vessels will be used in the water. Mariners are urged to exercise caution when in the vicinity.

Chart 12338 52/21

**NY-EAST RIVER-MONGOMERY STREET TO E 14 STREET**

IPCRP will be conducting Esplanade, bulkhead and park reconstruction work on the East River at Montgomery and East 14<sup>th</sup> Streets, in position 40-42-54.0N/ 073-58-27.7W from 01 January 2022 to 31 December 2026, Monday to Friday from 6:00am to 5:00pm. Equipment on scene will be tugboat, mooring barges, material handling barges, a crane barge and deck barge. Vessels will be on scene monitoring CH 13 and 66. Vessels will a one hour notification to move. Mariners are urged to transit at their slowest safe speed to minimize wake.

Chart 12335 LNM 50/21

**NY-EAST RIVER-MANHATTEN-EAST 60th and 53rd STREETS**

Trevcon Construction Co. Inc will be conducting installation of precast concrete/structural concrete work Existing Concrete on Piles on the Manhattan Side at Pier 40 on the East River, The physical location is 60th and York Ave, NY in position 40-45-23.094N/ 073-57-36.216W from 11 November 2021 – 30 June 2022, Monday to Friday from 5:00am to 7:00pm. Equipment on scene will be one Barge (250' x 75'), Two Barges (160' x

60'), One Barge (160' x 50'). All moving of vessels to occur by tugboat; vessels will be moved rarely but at all times of day and night. Vessels are requested to navigate with caution in this area.

Chart 12335 LNM 47/21

### NY-LONG ISLAND-FIRE ISLAND TO MONTAUK POINT-FIRE ISLAND INLET-Revised

Great Lakes Dock and Dredge Company has completed the contract work and crews are actively demobilizing dredging pipe and equipment in and around Fire Island Inlet. A 30" steel pipeline will be raised to the surface and towed inside Fire Island inlet for final demobilization from 1 November 2021 to 15 May 2022, 24 hours a day, 7 days a week. Equipment on scene will be the Tug CHARLOTTE V, Tug BRANGUS, Tug Layla RENEE, Tug CAVALIER STATE, Crew Boat MUSKEGON RIVER, DERRICK BARGE 66, DERRICK BARGE 70, and Anchor BARGE 115 and will be monitoring VHF-FM channels 13 and 16. Mariners transiting the work area are urged to exercise extreme caution, travel at the slowest safe speed to minimize wake, and proceed with caution after passing arrangements have been made.

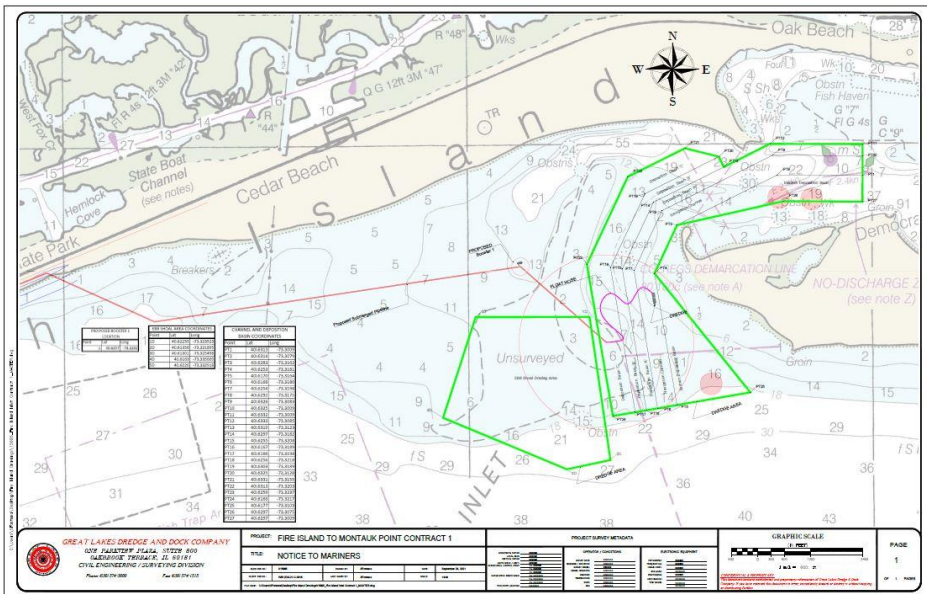


Chart 12326 LNM 14/22

### NY-EAST RIVER-BROOKLYN

ECDNY will be conducting wharf construction at 470 Kent Ave. Brooklyn, NY in approximate position 40-42-30.81N, 073-58-12.73W near Wallabout Channel from 11 October 2021 – 31 April 2022, from 6:00am to 6:00pm. Equipment on scene will be a barge with crane and push boat, and will be monitoring VHF-FM 19A. Vessels are requested to navigate with caution in this area.

Chart 12327 LNM 38/21

### NY-HUDSON RIVER-PIER 40

Trevcon Construction Co. Inc will be conducting Marine Construction/Pile Repairs/Concrete Pours/Fiberglass Jacket Install/Demo Existing Concrete on Piles on the Manhattan Side at Pier 40 on the Hudson River, The physical location is 92 Hudson River Greenway, New York, NY from 09 August 2021 – 31 April 2022, Monday to Friday from 6:00am to 6:00pm. Equipment on scene will two 39' x 140' material scows and will



monitor VHF-FM channel 5. All moving of vessels to occur by tugboat; vessels will be moved rarely but at all times of day and night. Vessels are requested to navigate with caution in this area.

Chart 12335 LNM 31/21

### **NY-GOWANUS CANAL**

The Gowanus Canal is closed to all recreational boating between 9th Street and Butler Street, including use of the 2nd Street public boat launch, at the direction of the U.S. Environmental Protection Agency (USEPA), the lead federal agency for the Gowanus Canal Superfund Site, due to the ongoing construction of the dredging and capping remedy of the canal until further notice unless specific advance written authorization is granted by USEPA. Contact: (212) 637-3639. For further information: <https://gowanussuperfund.com>.

Chart 12334 LNM 20/21

## **NEW JERSEY**

### **NJ-ARTHUR KILL-PORT SOCONY REACH-BOYNTON BEACH**

Commerce Construction Corporation will be conducting Commercial Diving Operations / Marine Construction at Shell Oil Sewaren Terminal 111 State Street, Sewaren, NJ beginning on 28 February – 30 June 2022, Monday - Friday from 6:00am – 4:00pm. Equipment on scene will be a 55' x 120' barge with crane support which will be inside the breasting line of the terminal. Mariners are urged to transit at their slowest safe speed to minimize wake.

Chart.12337 LNM 07/22